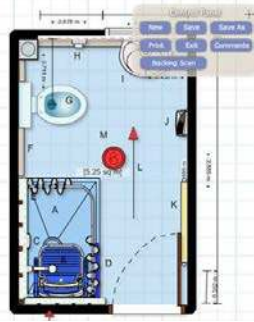


# Project case study



idapt  
planning



Customer Name

**Bristol City Council**

Contract

**Aids and Adaptations Programme**

## Project features

- Accessibility alterations and improvements
- Disabled Facilities Grant Work
- Refurbishment works in EPD's (Elderly Person Dwellings)
- External ramps and handrails
- Level access showers and bathroom refurbishment
- Kitchen adaptations
- Use of 'Idapt' web based system for adaptation design and planning around individual needs

## Advantages/benefits

- Close liaison with Occupational Therapists, Residents and their relatives
- Trained & DBS checked staff accustomed to working with vulnerable owner/occupiers
- Directly employed Level Access Shower fitters
- Additional works provided for Residents if needed at discounted Council rates
- Part of Bristol Housing Best Practice Partnership



## Contract details

Ian Williams were one of four contractors responsible for all accessibility adaptations required in City owned properties. We carried out a wide range of alterations and improvements including Disabled Facilities Grant work and refurbishment works in EPD's (Elderly Person Dwellings).

Works included ramps, handrails, level access showers, shower rooms, bathroom refurbishment and refits, kitchen adaptations and any other minor repairs associated with the works.

On this contract we used a system called Idapt for fast track cases. This is a web based design planning tool. It bases the design around the individual needs of each resident or homeowner - changing location, size or type of shower trays and altering drop down rails. It also allows us to show 'activity space' - for example how a wheelchair would navigate an external ramp or bathroom refurbishment.

Bristol City Council is also part of the Bristol Housing Partnership – an agreement between Bristol City Council and local Registered Social Landlords in the area. This is a 'Best Practice' Partnership aimed at standardising Aids and Adaptations in terms of specification and service. All work is carried out at Bristol City Council's agreed rates.