



Stroud District Council: Stroud Subscription Rooms



ian williams
Looking after Buildings

Project: Stroud Subscription Rooms



Task:
Internal Redecoration and Repairs

Products used:
Crown Clean Extreme & PV67 Heavy Duty Varnish

Client:
Stroud District Council

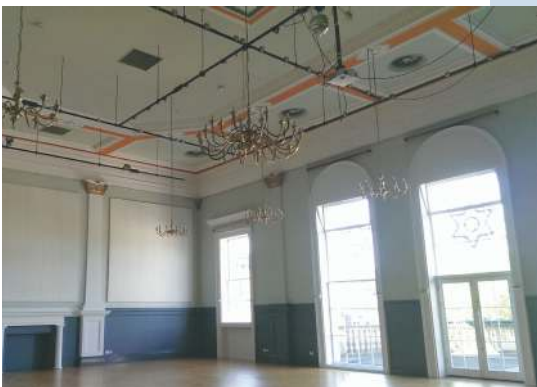
The Subscription Rooms is located in the heart of Stroud and gained its name after being built in 1833 by public subscription. Located on the first floor, the Ballroom is a focal point of the building, accommodating up to 450 people for various events including live music, performances and classes.

The Project

We carried out full internal redecorations and repairs to the Ballroom including the flooring as this room had become tired over the years. With a mixture of traditional and modern décor including intricate golden leaves contracted against 21st Century sound and lighting equipment, we had to not only ensure colour matching but also offer advice to ensure modern equipment did not distract from the room's features.

To increase the durability and lifecycle of the lower walls, we applied Crown Clean Extreme meaning marks could easily be wiped off. We used a PV67 Heavy Duty Varnish on the flooring to ensure it could withstand the regular ballroom dancing classes which take place in the Ballroom. As a result of our team's excellent craftsmanship, we were awarded extra work at the Subscription Rooms including redecoration to The George Room.

AFTER



Before



During



The Challenges

Challenges faced during this project included using mobile scaffold towers which could be manoeuvred around the varying heights of the grand ceiling. We also had to protect expensive fittings and equipment such as chandeliers and projectors as well as working around the room's stage. The Subscription Rooms remained open to the public and the Ballroom was used for events such as interviews requiring careful planning and programming whilst working to a tight 4-week timescale.

Apprentices / Trainees

Sam Delve, 2nd Year Painting and Decorating Apprentice and Edward Matthews, Trainee Surveyor, were involved in the entirety of this project gaining valuable skills of working in a period building.



Sam Delve



Edward Matthews

www.ianwilliams.co.uk



For further information
about Ian Williams Limited
and the services we provide,
please contact us.



Ian Williams Limited
Quarry Road
Chipping Sodbury
Bristol BS37 6JL

T 01454 328000

E enquiries@ianwilliams.co.uk

W www.ianwilliams.co.uk